

INFOCUS

New ideas. New solutions

BROA
CHING
TOOL
BR20

**NEW
TOOLS**

SLOT
MILLING
CUTTER
GN18

SHELL
END
MILL
CW90



For your success.
Max. Q – The next level.

Milling innovation and AVANTEC's latest solution: **The broaching tool**



LIEBLINGSWERKZEUG
For max. Q with powerful smoothness

- 4-cutting edge tangential indexable insert
- Cutting length up to $1.5 \times D$
- Extremely stable tool core
- Large insert seat contact surface
- Optimum cutting force absorption

SHELL
END
MILL
CW90

Q = 1065 ccm/min
Tool-Ø 63 mm
Material **St52**
 $V_f = 1420$ mm/min
 $a_p = 75$ mm | $a_e = 10$ mm

The CW 90 is the beefiest among our porcupine cutters for hobbing and corner milling, it even masters face milling jobs. Its core is extremely stable; the cutting force absorption into the tool body is optimal. The indexable inserts' large carbide volume provides better heat dissipation. Its Q-performance is outstanding.



LIEBLINGSWERKZEUG
For fine cutting and severing

- Double-cutting edge indexable insert
- Widths of cut from 2.5 mm
- Excellent cutting force distribution
- Fine tooth pitch
- High feed rates

SLOT
MILLING
CUTTER
GN18

Q = 27,5 ccm/min
Tool-Ø 125 mm
Material **C45**
 $V_f = 550$ mm/min
 $a_p = 2,5$ mm | $a_e = 20$ mm

The new GN18 is a standard milling cutter. It slits and severs. It has double-cutting edge indexable inserts that are inter-locked. This makes the GN18 extraordinarily reliable. And fast. Moreover, it boasts a compact design. To accommodate more teeth. They deliver... more Q.

... since **maximum Q** is
the **ultimate goal**.

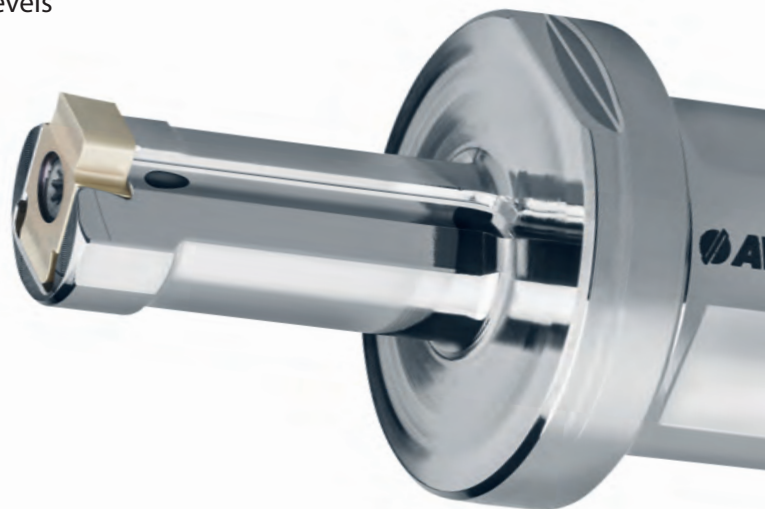
Some manufacturers have to increase their productivity levels time and time again by maximizing their metal removal rate. There are many others who are in the market looking for longer and longer tool life. This is not always compatible with the more Q objective. Or is it? No matter what your current or future manufacturing needs are – with new ideas and innovative solutions, we offer tool performances that simply set benchmarks.

Double-cutting edge indexable insert
Best cutting and gliding characteristics
High cutting data even at low machine performance levels
Highly stable cutting edge support
Polished precision indexable inserts
Internal cooling

BROA
CHING
TOOL
BR20

Q = 1,5 ccm/min
Tool-Ø 52 mm
Material 1.2312 (1200 N/mm²)
v_f = 5000 mm/min
a_p = 0,05 mm | **a_e = 6 mm**

LIEBLINGSWERKZEUG
For process reliable broaching



To recap the story: When broaching the keyways for our tool bodies, our production team kept running into unexpected problems. This caused vexation in the team. This vexation remained. Then we designed a specific tool. No more vexation. Instead, we have a stable and reliable broaching process. We are pleased. Our new broaching tool has been cleared for distribution. We call it BR20.

 **AVANTEC**

It's all about Q

First comes the solution.
Then our tool.
And then your success.

AVANTEC Zerspantechnik GmbH
Wilhelmstraße 123 | 75428 Illingen | Deutschland
T +49 7042 8222-0 | info@avantec.de | avantec.de

Italy AVANTEC Italy S.r.l.
Via Gramsci 157 | 24069 Trescore Balneario
T +39 035 4258369 | avantec-italy@avantec.de

USA AVANTEC USA, LLC
50 South Chestnut Street | Boyertown, PA 19512
T +1 610 473 2872 | avantec-usa@avantec.de

Austria AVANTEC Austria GmbH
Knoppen 93 | 8984 Bad Mitterndorf
T +43 3624 27915 | avantec-austria@avantec.de

China AVANTEC (Shanghai) Trading Co., Ltd.
Room 753A, Tower 3, German Centre
No. 88 Keyuan Rd. | Pudong 201203 Shanghai
T +86 21 68782268 | avantec-china@avantec.de



Indexable Inserts | Broaching Tools | Shell End Mills | Face Milling Cutters | Side Milling Cutters
Slot Milling Cutters | Copy Milling Cutters | Shoulder Milling Cutters | Shank End Mills
T-Slot Milling Cutters | Circular Milling Cutters | Avant Easy Change Program